

annualreview



Herts and
Middlesex

2017-2018



A BETTER
FUTURE FOR *wildlife*

BLACK-NECKED GREBE LUKE MASSEY 2020VISION



Wildlife Highlights



Damselflies and dragonflies thriving

- The total number of breeding dragonfly and damselfly species in Hertfordshire is now 26. Given that not so long ago the total was 19, this is an amazing increase.
- 11 white-legged damselflies were found along the River Stort between Harlow and Roydon, including at our Hunsdon Mead Nature Reserve. These were previously thought to be extinct in Hertfordshire.
- Willow emerald damselflies have spread and are doing well at Amwell and Fir and Pond Woods. Proof of breeding has been found at Panshanger Park.
- Scarce chaser and Norfolk hawker dragonflies have been found at Amwell.
- At Hertford Heath scarce emerald damselfly was found again, showing there is now a breeding colony.
- At Hilfield Park Reservoir lesser emperor and red-veined darter dragonflies are breeding.



White-legged damselfly male

TIM HILL

Birds booming

- Three pairs of black-necked grebes raised five young at Hilfield Park Reservoir, the only place in southern England where these rare birds breed.
- 10 green sandpipers have been seen on the lagoons at Lemsford.
- Bitterns have been seen at Amwell, Marsworth and Rye Meads.
- At Amwell there was an early bittern record in August, yellow-legged and Caspian gulls were present in the autumn roost, and a host of wildfowl in the winter was spotted, including goldeneye, smew, pintail and goosander.
- Grasshopper warblers and barn owls are breeding at Thorley Wash.



Barn Owl

RUSSELL SAVORY

Plants Flourishing

- Tubular water dropwort has been found at Rye Meads after a number of years of not being recorded.
- 20 southern marsh orchids have been discovered at Thorley Wash after a 20 year absence.
- At Fox Covert there are large numbers of white helleborine flowering.



Southern marsh orchid

CHARLOTTE HUSSEY

Thank You

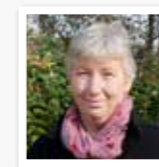
All of our work is only made possible with your support. Thank you to all of the Trust's members, volunteers, donors and partners for actively helping protect wild places across Hertfordshire and Middlesex. We are at a time when, locally and nationally, pressures on wildlife are increasing and the Trust simply could not make the difference it does without this support.

Our thanks go to each and every volunteer for their varied and ongoing support, without whom the Trust could not function. From work parties on our reserves and species monitoring in the wider landscape, to working in the head office and supporting our events programme, our volunteers donate thousands of hours each year

to protect wildlife and help people enjoy the wild places around them.

With over 22,000 members, we have a powerful local voice enabling us to stand up for wildlife. With the support of our members, the Trust is the leading voice for conservation in Hertfordshire and Middlesex.

However you have supported the Trust, thank you, together we can achieve a better future for wildlife.

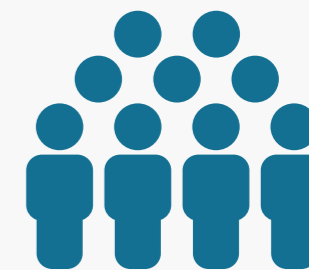


Lesley Davies



M. McJ.

The Trust has



22,312
members

Wildlife conservation

Tewinbury Nature Reserve

JOSH KUBALE

On our reserves...

Our Reserves Team and volunteers have been working hard to improve habitats and support an increase in species across our nature reserves.

Woodlands

Our woodlands have benefitted from coppicing and holly removal to let in light and create a woodland structure beneficial to a wide variety of wildlife. A Fox Covert we have seen the flourishing of white helleborine, with numbers of this flower increasing year on year, while coppicing at Old Park Wood helps to ensure the right environment for the rare coral root bittercress.

Wetlands

Thanks to concerted efforts to improve wetland habitats we are seeing an increase in dragonfly and damselfly as highlighted on page 2.

Bitterns, water voles and wetland birds are benefitting from reedbed management at Amwell, Wilstone and Stanborough Reedmarsh, and, thanks to funding from the Environment Agency, we've kicked off a three-year project at Tewinbury to improve the wetland habitats by removing willow from the reedbed and creating water vole breeding habitat.

Grasslands

Our Living Lawnmowers and band of volunteers have continued to keep the grass cut at our grassland reserves. Aldbury Nowers saw the creation of mining insect scrapes and bee banks, while at Frogmore Meadow we cleared scrub and held our annual haymaking sessions. At Danemead many larger trees were removed to open up the wood pasture to benefit botanical diversity. At Patmore Heath we continued to restore the grassland areas – and area equivalent to three tennis courts has been converted from scrub to grassland.

... and in the wider countryside

Farmland conservation

Four farms were surveyed as part of The Wildlife Trusts' with Jordans Cereals, with management advice given to improve their ecological value. Bird surveys were conducted on three farms to provide a baseline to measure changes in populations and diversity following the implementation of our advice.

Pioneering barbel conservation

The Living Rivers Project took on a new initiative with the Lee Valley Regional

Park Authority, Environment Agency, Kings Weir Fishery and Fishers Green Angling Consortium to improve the habitat of the Old River Lea. The aim was to allow barbel stocks to recover to a sustainable level and create the right environment for a wide range of other aquatic wildlife.

Wildlife consultancy

Over the last year the Trust has produced management plans for The Grove, Gerrard's Cross Golf Club and Merchant Taylors' School, in addition to carrying out ecological surveys of Cedars Park, Cheshunt and sections of the rivers Lea and Purwell.

Local Wildlife Sites

Our team of 12 volunteer surveyors conducted 33 surveys of woodlands and grasslands, covering over 525 hectares.



Barbel

SHUTTERSTOCK

Standing up for Wildlife

Impact on housing and infrastructure proposals

Over the year we reviewed more than 23,000 planning applications, commented on nine Local Plans, ten Neighbourhood Plans and appeared at two Local Plan hearing sessions to present our views. We are pleased where local authorities have adopted the model policies which we recommend to ensure the protection of wildlife and wild places.

Extensive comments were made on the Heathrow Airport expansion consultation and we have continued to seek to influence the design of High Speed Two to reduce its negative ecological impacts and seek positive mitigation where possible.

Herts Environmental Records Centre

Herts Environmental Records Centre continues to build its evidence base; the total number of records currently stands at 2.4 million, with almost 300,000 of these from our nature reserves.

The data was used by 651 projects including three Neighbourhood Plans and 396 pre-planning application ecological reports. HERC continues to support the Local Wildlife Sites Partnership, attending ratification meetings, capturing the site boundaries to GIS, commenting on selection criteria and providing data to help inform management statements written by the Wildlife Sites survey team. Additionally, HERC is working with Orchards East to map historic orchards in Hertfordshire with the help of volunteers.

National campaigns

We have continued to participate in national campaigns and activities, such as 30 Days Wild in June. The Trust has also used local press to amplify national messages and campaigns including The Wildlife Trust's response to the Government's 25 Year Environment Plan and the national report on declining water vole numbers. The Trust also challenged our MPs to ensure that, post-Brexit, legislation is strong to protect wildlife and that positive agri-environment schemes are in place to support the creation and management of vulnerable habitats.



Water vole

RUSSELL SAVORY



Flower beetle

JOSH KUBALE

Inspiring and engaging people



EMMA MATTHIAS

Hilfield Park Reservoir

Go Wild events

Over 7,600 people, including 2,800 children, enjoyed our programme of walks, talks and events this year. Festival of Wildlife at Panshanger Park attracted 3,000 people. The two-day Festival, run in association with Herts Natural History Society and hosted by Tarmac, gave visitors the chance to explore the natural world with our team of experts. Apple Day saw visitor numbers double to 1,200, sampling the produce of our traditional orchard nature reserve in Tewin and learning about its wildlife.

New events over the year, included bee-keeping workshops, gin tasting events and a talk by acclaimed wildlife filmmaker Russell Savory.

The new Go Wild Volunteers project recruited 26 volunteers to help at events on behalf of the Trust. The project, funded by Tesco Bags of Help and Aviva Community Fund provided training for the volunteers in leading guided walks and first aid. Over the year these volunteers put in over 650 volunteer hours and continue to assist in our activities.

7,600 people including **2,800 children** enjoyed **216 events**



Beekeeping Workshop



Mammals and Bird Ringing Hilfield



Festival of Wildlife

Volunteering

Our volunteers are invaluable in helping us across our nature reserves and in the office. From Volunteer Wardens, assistants and surveyors managing and surveying reserves, to community speakers, the office and wildlife team at Grebe

House, event leaders and the Mid Herts Local Group helping us champion wildlife across Hertfordshire and Middlesex.

The Nature Reserves and Wildlife Sites Trainee programme had another successful year, with trainees learning practical conservation and ecological field skills.

594 volunteers

gave

1,900 days

worth

£123,214

A year of partnerships

Affinity Water Biodiversity Project

Our partnership with Affinity Water is improving habitats and increasing community engagement at Stockers Lake, Springwell Reedbed and Hilfield Park Reservoir. Our People and Wildlife Officer's events such as wildfowl identification and volunteer work parties have proved popular, and a feature on BBC's Countryfile covered the construction of an innovative artificial kingfisher nesting bank made from straw bales.



volunteer group who assist with practical conservation and ecological monitoring. Our partnership won the prestigious Cooper Heyman Cup in 2017, recognising the restoration of the Park to high quality wildlife habitats.

Harpenden's natural world

In partnership with the Town Council, our Harpenden People and Wildlife Officer has helped to manage the town's wonderful array of wild places and encourage people to visit them. Over 500 children were inspired by their local wildlife at events, and volunteers made a significant contribution to the conservation of the habitats of Harpenden Common.



Panshanger Park

Our partnership with Tarmac has continued at Panshanger Park, with our People and Wildlife Officer welcoming visitors to the Park and organising guided walks and events, as well as running the



EMMA MATTHIAS

Stevenage Borough Council

Following our review of the Stevenage Biodiversity Action Plan, we continued to advise the Borough Council on the detailed implementation of the management plan across the town's 2,600 hectares of wetlands, woodlands, urban habitats and grasslands.

Barbastelle bats

Working with Herts & Middlesex Bat Group, University of Hertfordshire, Environment Agency and Herts Natural History Society, the Barbastelle Bat Project

has gone from strength to strength, recording over 350 new records of nationally-rare barbastelle bats, including three potential maternity roosting areas. Funding from the Spear Charitable Trust, the Christopher Laing Foundation, and the John Spedan Lewis Foundation enabled the purchase of 24 boxes to provide roost sites and four sophisticated remote detectors to record bat echo location calls.

Puddingstone Distillery

This year Puddingstone Distillery launched a world-first Himalayan balsam gin in support of the Trust. The gin, which uses the distinctive pink flowers of the invasive Himalayan balsam plant to add colour and flavour, proved popular and 300 bottles sold out within weeks, with £2 from each bottle being donated to the Trust. The project also gained coverage in The Times, The Telegraph, BBC London News and Farming Today on Radio 4. This coverage gave good exposure to the Trust's work with invasive species and the threats they pose to local wildlife.



Funding our work



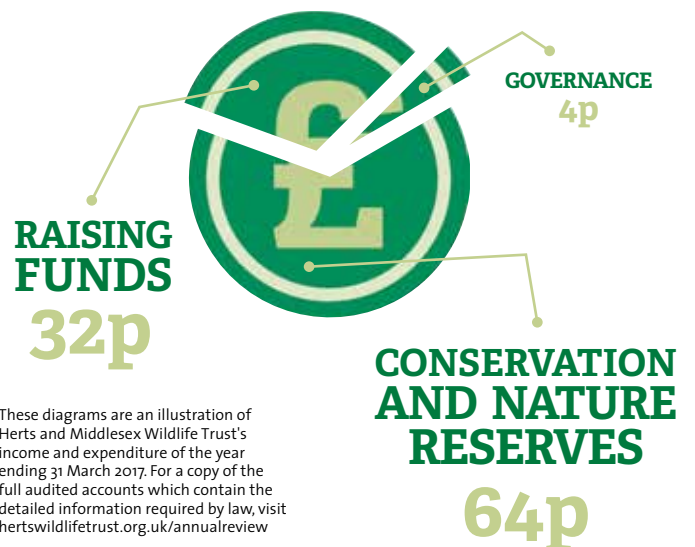
Income

Membership subscriptions **£1,035k**
Legacies **£655k**
Fees and contracts **£287k**
Grants (restricted) **£185k**
Donations, gifts and grants (unrestricted) **£89k**
Fundraising activities **£53k**
Investments and other income **£38k**
TOTAL £2,342k

Expenditure

TOTAL **£1,766**

For every £1 the Trust spends...



These diagrams are an illustration of Herts and Middlesex Wildlife Trust's income and expenditure of the year ending 31 March 2017. For a copy of the full audited accounts which contain the detailed information required by law, visit hertswildlifetrust.org.uk/annualreview

Thank you

Legacies

We were extremely grateful to receive legacies from the following people this year: **Gwendolene Violet Card, Ada Joan Franklin, Michael Harverson, Thomas Kittle, George Frank Rogers and Gerald Salisbury**

Corporate Members:

Platinum

Bourne Leisure Group
UK Power Networks (Operations) Ltd

Gold

Affinity Water
Johnson Matthey
Islandbridge Properties Limited
Thames Water Utilities
The Grove Hotel, Spa and Golf Resort

Silver

Cemex UK
Tarmac

Bronze

The Institute of the Motor Industry

Grants and donations

Aldbury Parish Council
Abbots Langley Parish Council
Affinity Water
Aviva Community Fund
City of London Corporation (Green Arc)
Ken Moody
Environment Agency
Friends of Tewin
Harpenden Town Council
Hertfordshire County Council
Hertfordshire County Council Locality Budget (Cllr Crofton, Cllr Buckmaster, Cllr Kaye, Cllr Eames-Peterson, Cllr Boulton)
HS2 Colne Valley Regional Park Panel
John Davis
John Spedan Lewis Foundation
Kate Aylett
Lea Valley Regional Park Authority
London Borough of Hillingdon
Mayor of Hertford, Cllr Linda Radford

Miss S M G Ross Trust
Natural England
Robert Kiln Charitable Trust
Royal Society of Wildlife Trusts
Rural Payments Agency (DEFRA)
Stansted Airport Community Fund
Tarmac
Tesco Bags of Help
Thames Water
The Christopher Laing Foundation
Friends of Stocker's Lake
The Rothschild Foundation
The Spear Charitable Trust
Tring Rural Parish Council
Veolia Environmental Services
Welwyn Hatfield Borough Council

